

Investitor: "TATARSKOBRDO RESIDENCE" DOO, Industrijska bb, Novi Sad  
 Objekat: STAMBENI KOMPLEKS (Lamela 11)  
 Lokacija: Kat. Parcele: 4133/8 K.O. Sremska Kamenica, Institutski put,

trosoban

Sprat	I	
Br. stana	05	62.21 m <sup>2</sup>

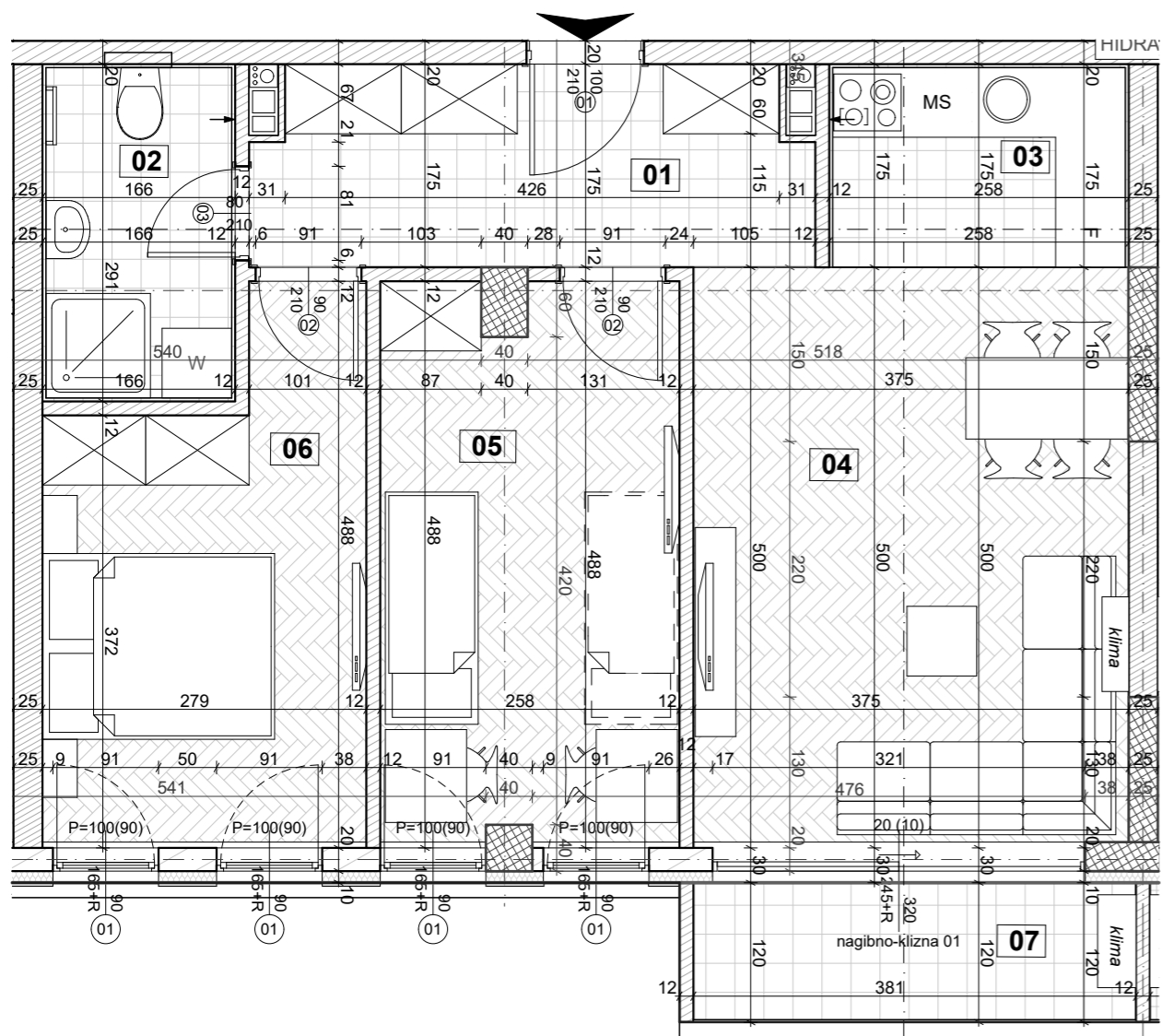
Sprat	II	
Br. stana	12	62.20 m <sup>2</sup>

Sprat	III	
Br. stana	19	62.24 m <sup>2</sup>

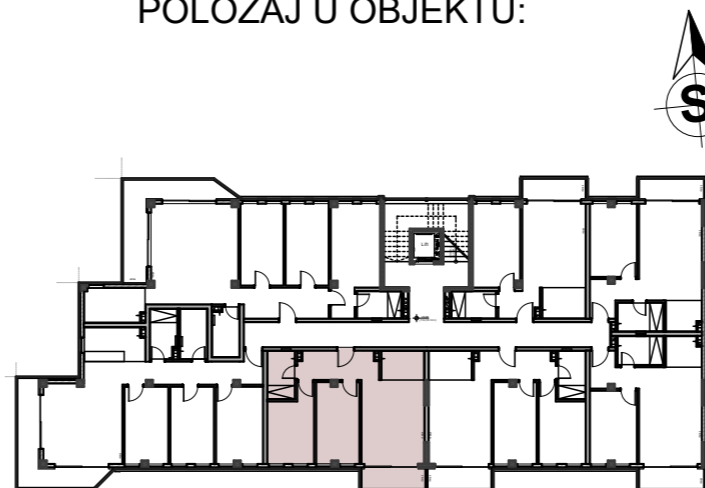
Sprat	IV	
Br. stana	26	62.25 m <sup>2</sup>

Sprat	Ps	
Br. stana	33	62.29 m <sup>2</sup>

Obrac̄un površina		
br.	Prostorija	P red 3%
<b>L11-Stan 05</b> trosoban		
01	Hodnik	7.88
02	Kupatilo	4.68
03	Kuhinja	4.38
04	Dnevni boravak	18.00
05	Spavaća soba 01	11.83
06	Spavaća soba 02	11.08
07	Terasa	4.36
		<b>62.21 m<sup>2</sup></b>



POLOŽAJ U OBJEKTU:



POLOŽAJ LAMELE U KOMPLEKSU:

